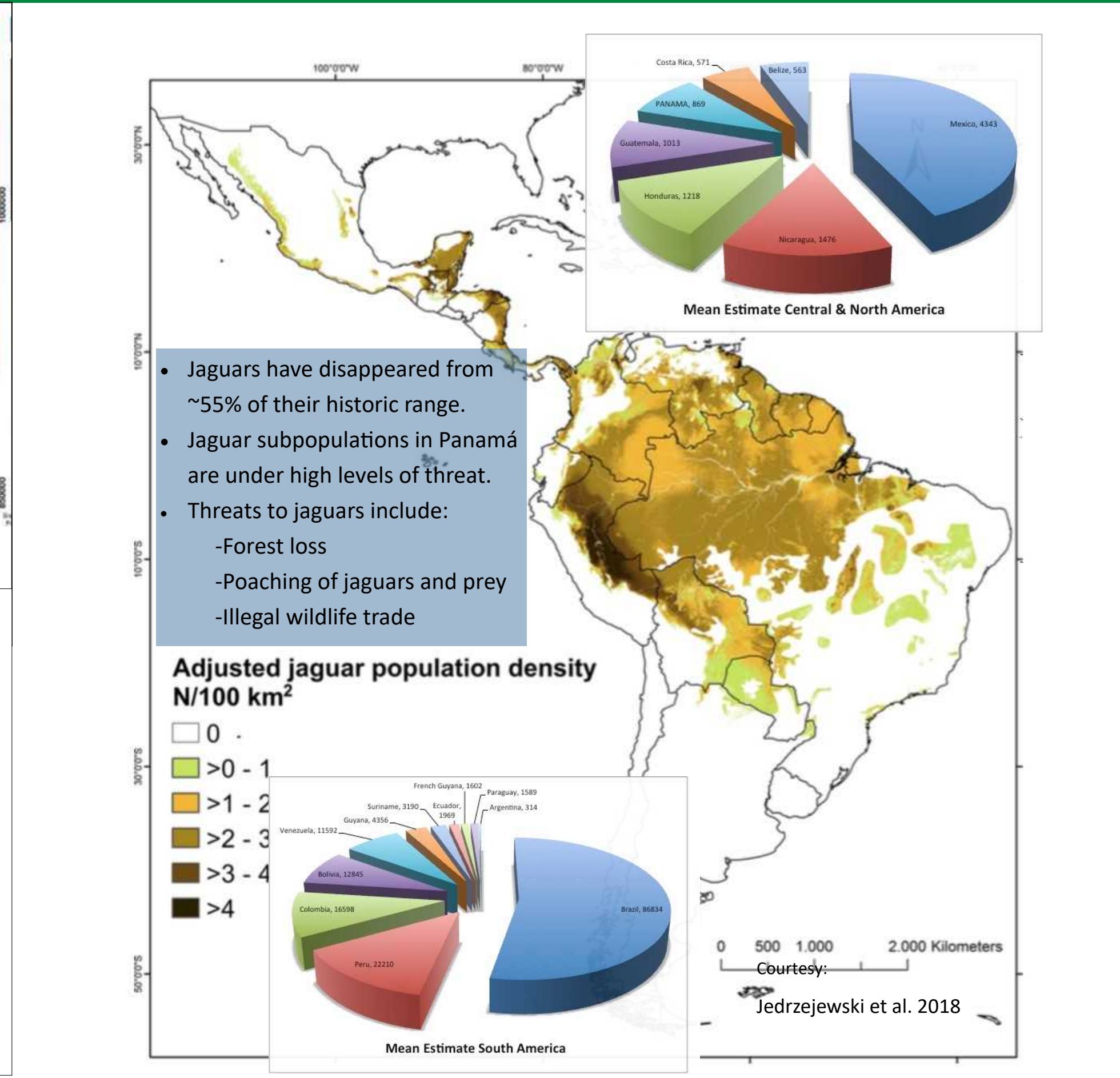
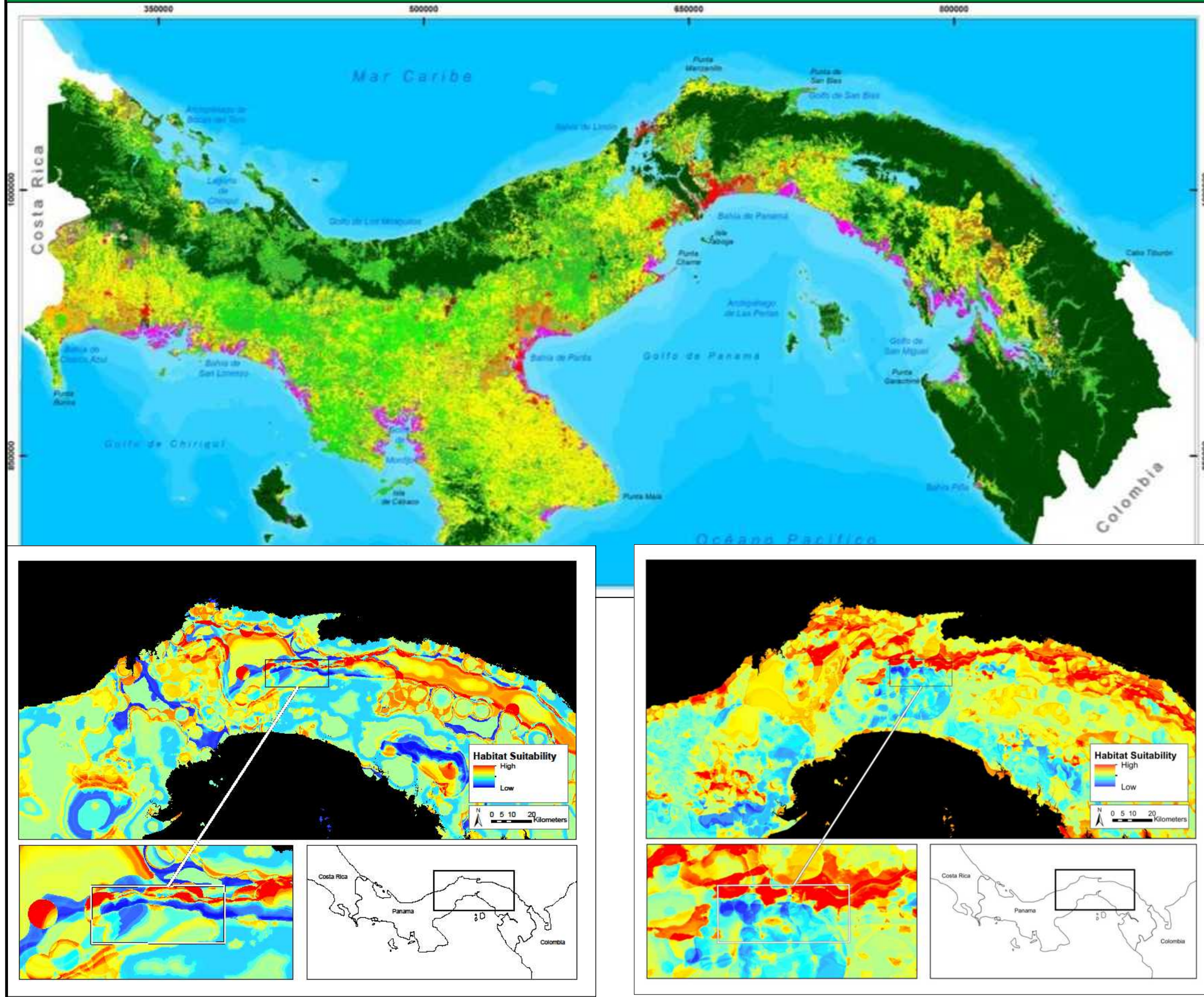




## THE MAMONI VALLEY JAGUAR PROJECT

Multi-scale habitat models predict the environmental variables and optimal scales that jaguars select habitat in the Isthmus of Panamá



**Key Findings**

- Jaguar habitat selection is driven by elevation, aspect, slope, rivers, precipitation, fallow land, and human settlements at fine scales.
- Jaguar habitat use is limited by secondary forest at a broad scale.
- Our research provides an index of habitat selection to base future studies, and acts as a guideline for conservation planning.

Craighead et al. 2019

**Future Studies**

- Expand camera-trapping efforts throughout Panamá to sample more landcover types
- Build upon the models to map connectivity and identify corridors to promote genetic flow
- Combine camera-trapping methods with GPS collaring

## COMMUNITY OUTREACH

An integrated conservation approach, educating and engaging the community within the valley to learn more about wildlife and ecosystem benefits, is one of the hallmarks of Kaminando's program



Our "Guardianes del jaguar" initiative aims to educate children from four schools within the valley on the intrinsic value of the forest, and the jaguar as an apex predator.

Kaminando works hard to prevent the disappearance of the tropical forest and the majestic jaguar!

Once they are gone, they are gone forever.

Kaminando.org



- Our program builds local conservation capacity in biological research and wildlife monitoring.
- We incorporate alternative income generation by developing tourism in high quality forest lands owned by community members.